



azur
HOMES

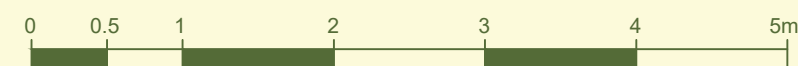
RESIDENTIAL



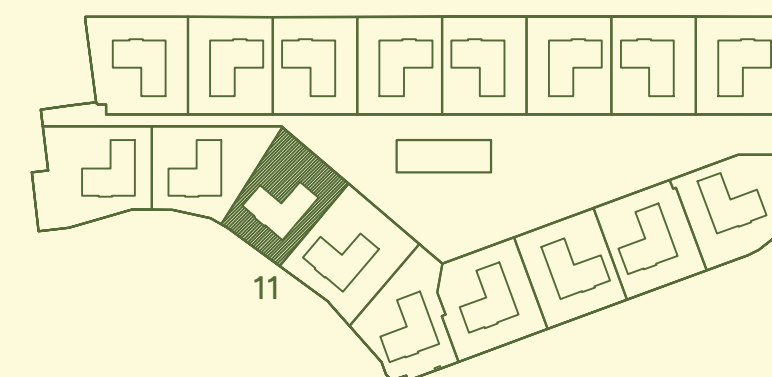
ECOGREEN17

AREA

BUILT AREA:	111,69 m ²
LIVING AREA:	95,29 m ²
TERRACE AREA:	34,15 m ²
PRIVATE PLOT AREA:	250,44 m ²
PLOT AREA WITH C.E.	328,38 m ²

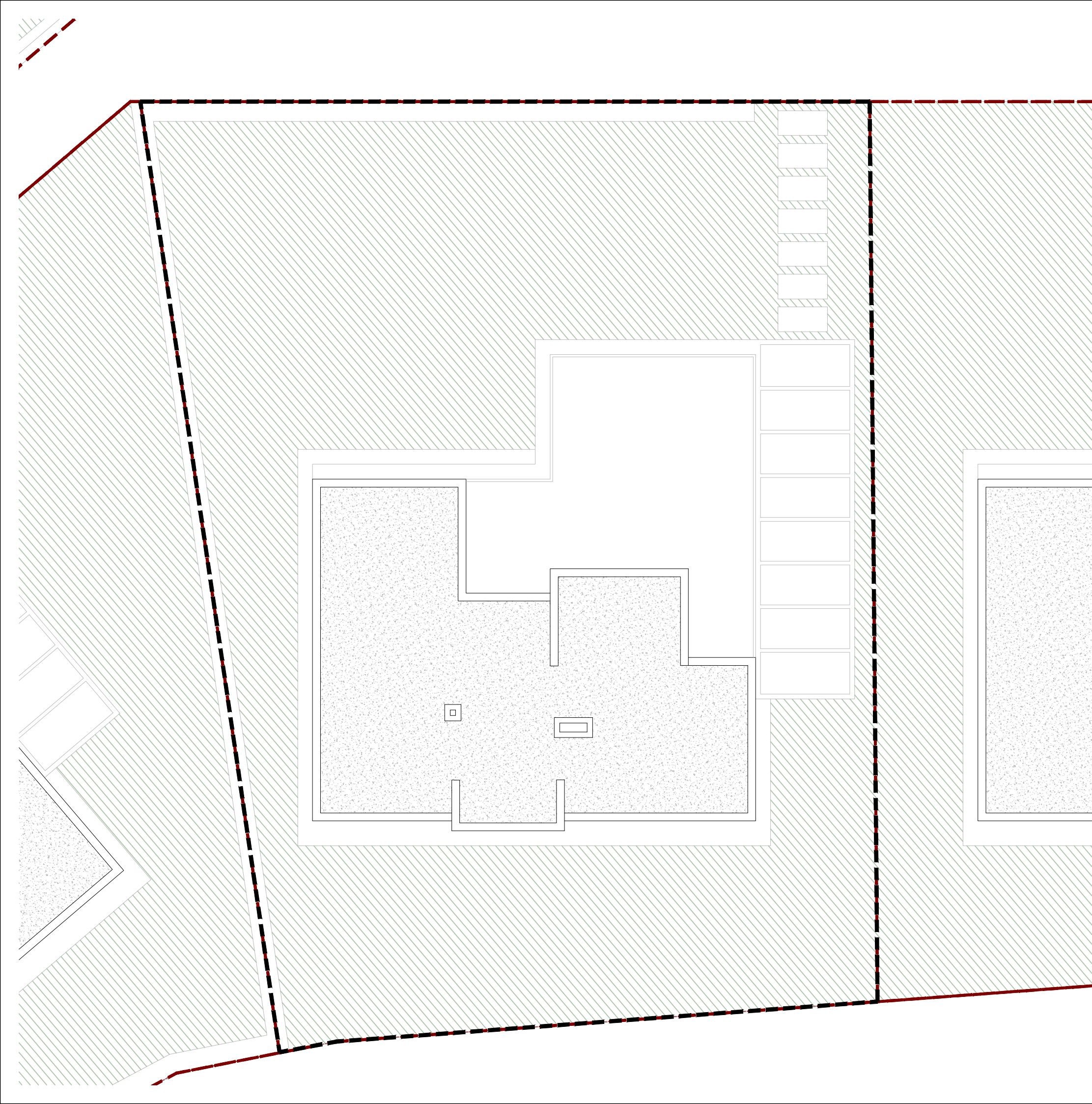


LIVING 11
TYPE B



Due to project requirements, this document may undergo variations.

The surfaces are approximate and may undergo modifications in the development of the execution of the work for technical reasons.





azur
HOMES

RESIDENTIAL



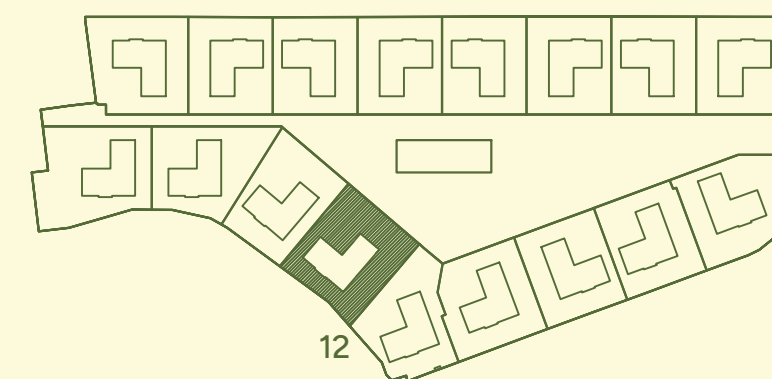
ECOGREEN17

AREA

BUILT AREA:	111,69 m ²
LIVING AREA:	95,29 m ²
TERRACE AREA:	34,15 m ²
PRIVATE PLOT AREA:	278,71 m ²
PLOT AREA WITH C.E.	356,65 m ²



LIVING 12 TYPE B



Due to project requirements, this document may undergo variations.

The surfaces are approximate and may undergo modifications in the development of the execution of the work for technical reasons.



azur
HOMES

RESIDENTIAL



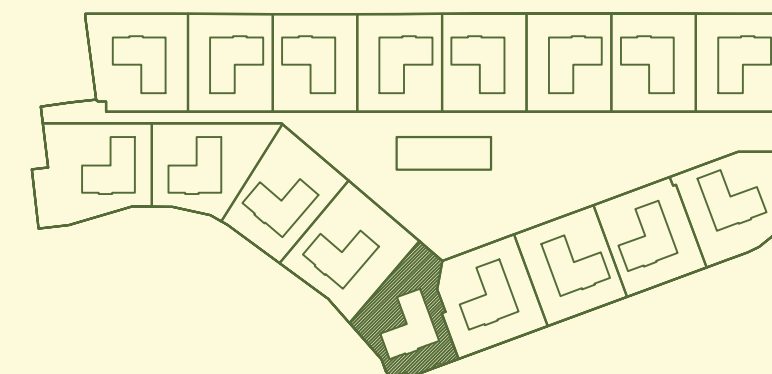
ECOGREEN17

AREA

BUILT AREA:	111,69 m ²
LIVING AREA:	95,29 m ²
TERRACE AREA:	34,15 m ²
PRIVATE PLOT AREA:	240,35 m ²
PLOT AREA WITH C.E.	318,29 m ²



LIVING 13
TYPE B



13



Due to project requirements, this document may undergo variations.

The surfaces are approximate and may undergo modifications in the development of the execution of the work for technical reasons.



azur
HOMES

RESIDENTIAL



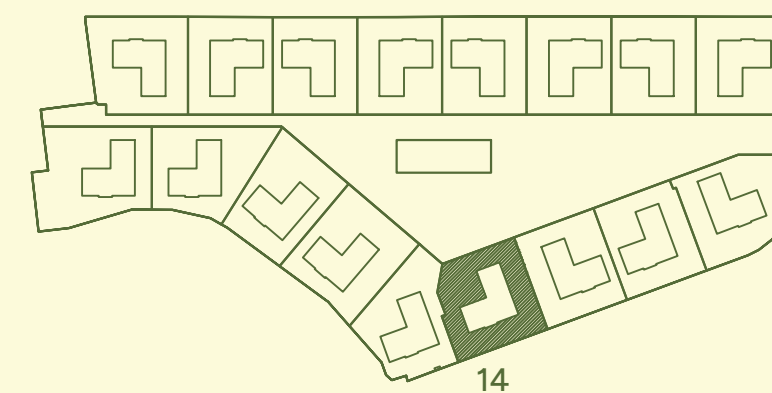
ECOGREEN17

AREA

BUILT AREA:	111,69 m ²
LIVING AREA:	95,29 m ²
TERRACE AREA:	34,15 m ²
PRIVATE PLOT AREA:	254,39 m ²
PLOT AREA WITH C.E.	332,33 m ²



LIVING 14
TYPE B



Due to project requirements, this document may undergo variations.

The surfaces are approximate and may undergo modifications in the development of the execution of the work for technical reasons.



azur
HOMES

RESIDENTIAL



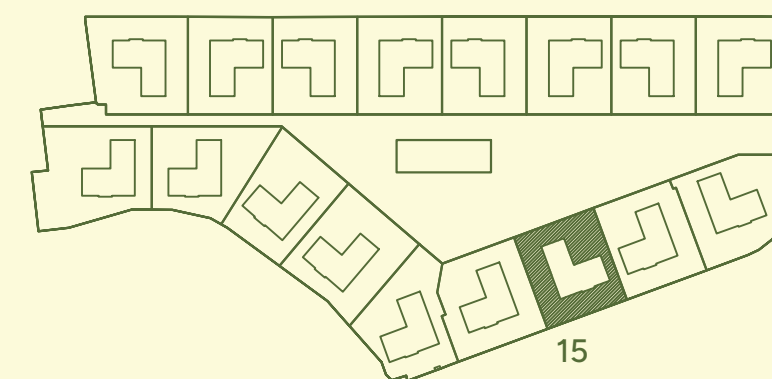
ECOGREEN17

AREA

BUILT AREA:	111,69 m ²
LIVING AREA:	95,29 m ²
TERRACE AREA:	34,15 m ²
PRIVATE PLOT AREA:	236,59 m ²
PLOT AREA WITH C.E.	314,53 m ²



LIVING 15
TYPE A



Due to project requirements, this document may undergo variations.

The surfaces are approximate and may undergo modifications in the development of the execution of the work for technical reasons.



azur
HOMES

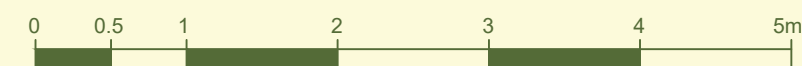
RESIDENTIAL



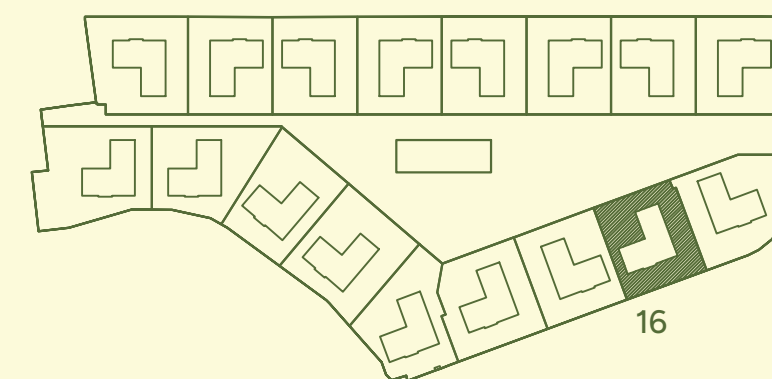
ECOGREEN17

AREA

BUILT AREA:	111,69 m ²
LIVING AREA:	95,29 m ²
TERRACE AREA:	34,15 m ²
PRIVATE PLOT AREA:	235,56 m ²
PLOT AREA WITH C.E.	313,50 m ²



LIVING 16
TYPE B



16



Due to project requirements, this document may undergo variations.

The surfaces are approximate and may undergo modifications in the development of the execution of the work for technical reasons.



azur
HOMES

RESIDENTIAL



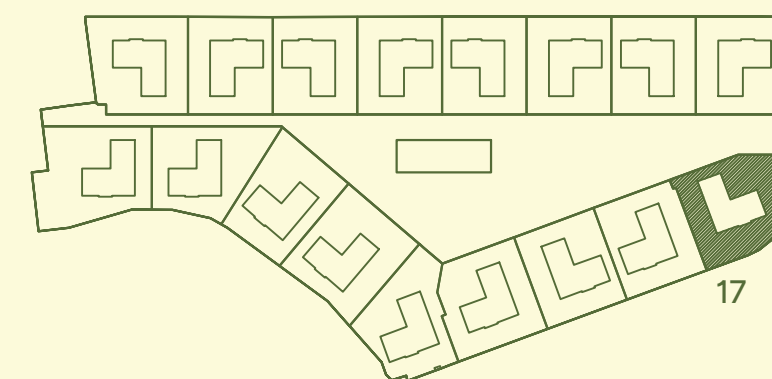
ECOGREEN17

AREA

BUILT AREA:	111,69 m ²
LIVING AREA:	95,29 m ²
TERRACE AREA:	34,15 m ²
PRIVATE PLOT AREA:	268,95 m ²
PLOT AREA WITH C.E.	268,95 m ²



LIVING 17
TYPE A



Due to project requirements, this document may undergo variations.

The surfaces are approximate and may undergo modifications in the development of the execution of the work for technical reasons.



azur
HOMES

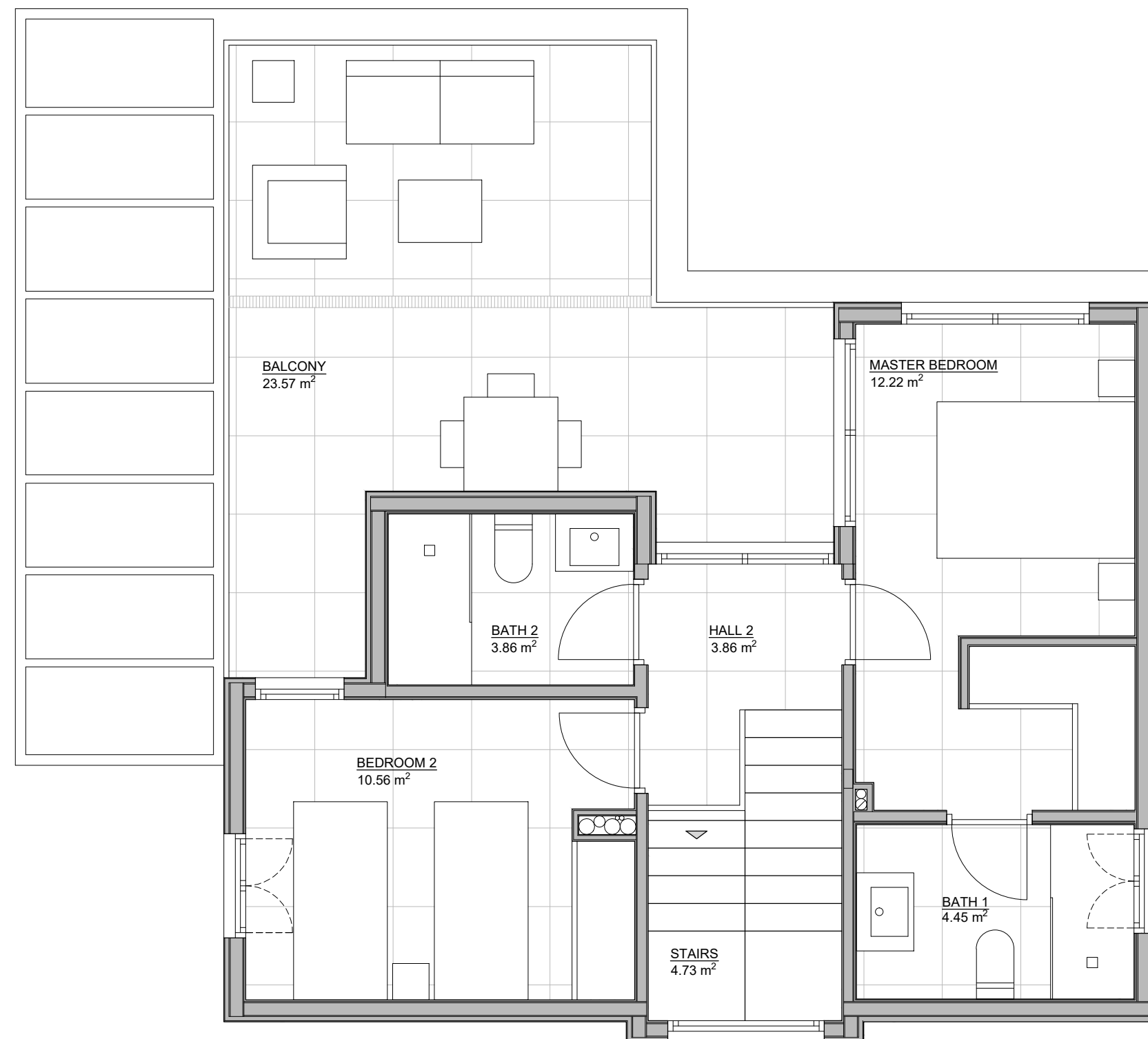
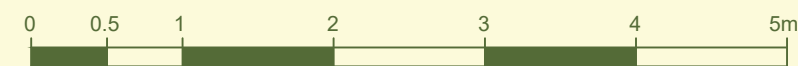
RESIDENTIAL



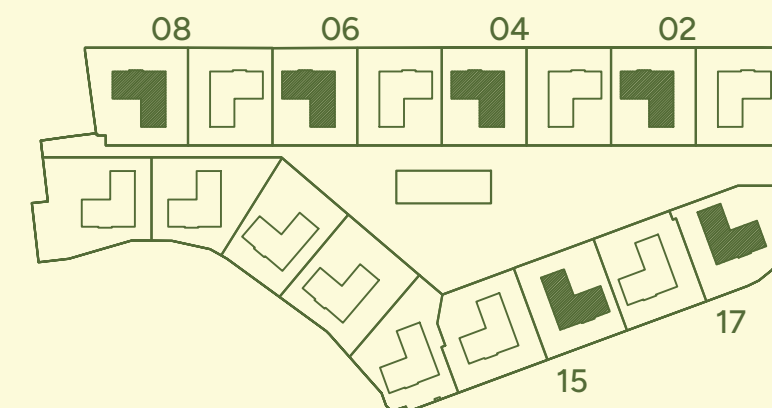
ECOGREEN17

AREA

BUILT AREA:	111,69 m ²
LIVING AREA:	95,29 m ²
TERRACE AREA:	34,15 m ²



LIVING TYPE A:
2,4,6,8,15,17



- NEV FRIDGE
- AERO AEROTHERMY
- LAV DISHWASHER
- L WASHING MACHINE
- H+M OVEN+MICROWAVE
- V WINE STORE

FIRST FLOOR



Due to project requirements, this document may undergo variations.

The surfaces are approximate and may undergo modifications in the development of the execution of the work for technical reasons.



azur
HOMES

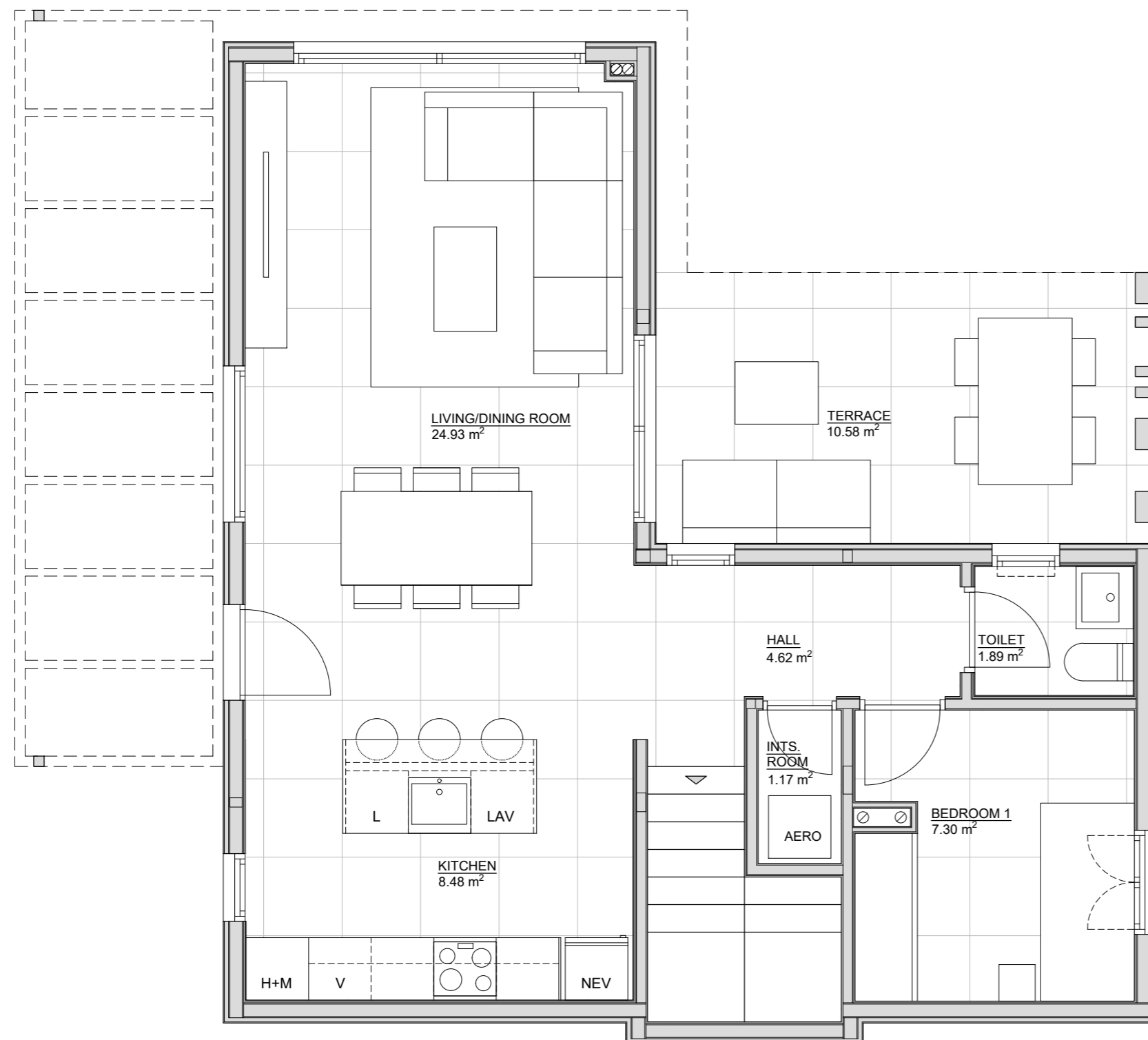
RESIDENTIAL



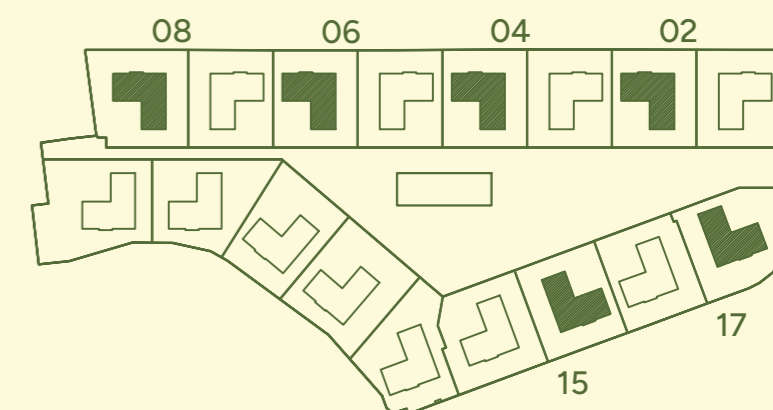
ECOGREEN17

AREA

BUILT AREA:	111,69 m ²
LIVING AREA:	95,29 m ²
TERRACE AREA:	34,15 m ²



LIVING TYPE A:
2,4,6,8,15,17



- NEV FRIDGE
- AERO AEROTHERMY
- LAV DISHWASHER
- L WASHING MACHINE
- H+M OVEN+MICROWAVE
- V WINE STORE

BASEMENT



Due to project requirements, this document may undergo variations.

The surfaces are approximate and may undergo modifications in the development of the execution of the work for technical reasons.



azur
HOMES

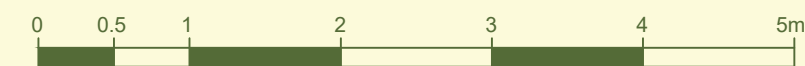
RESIDENTIAL



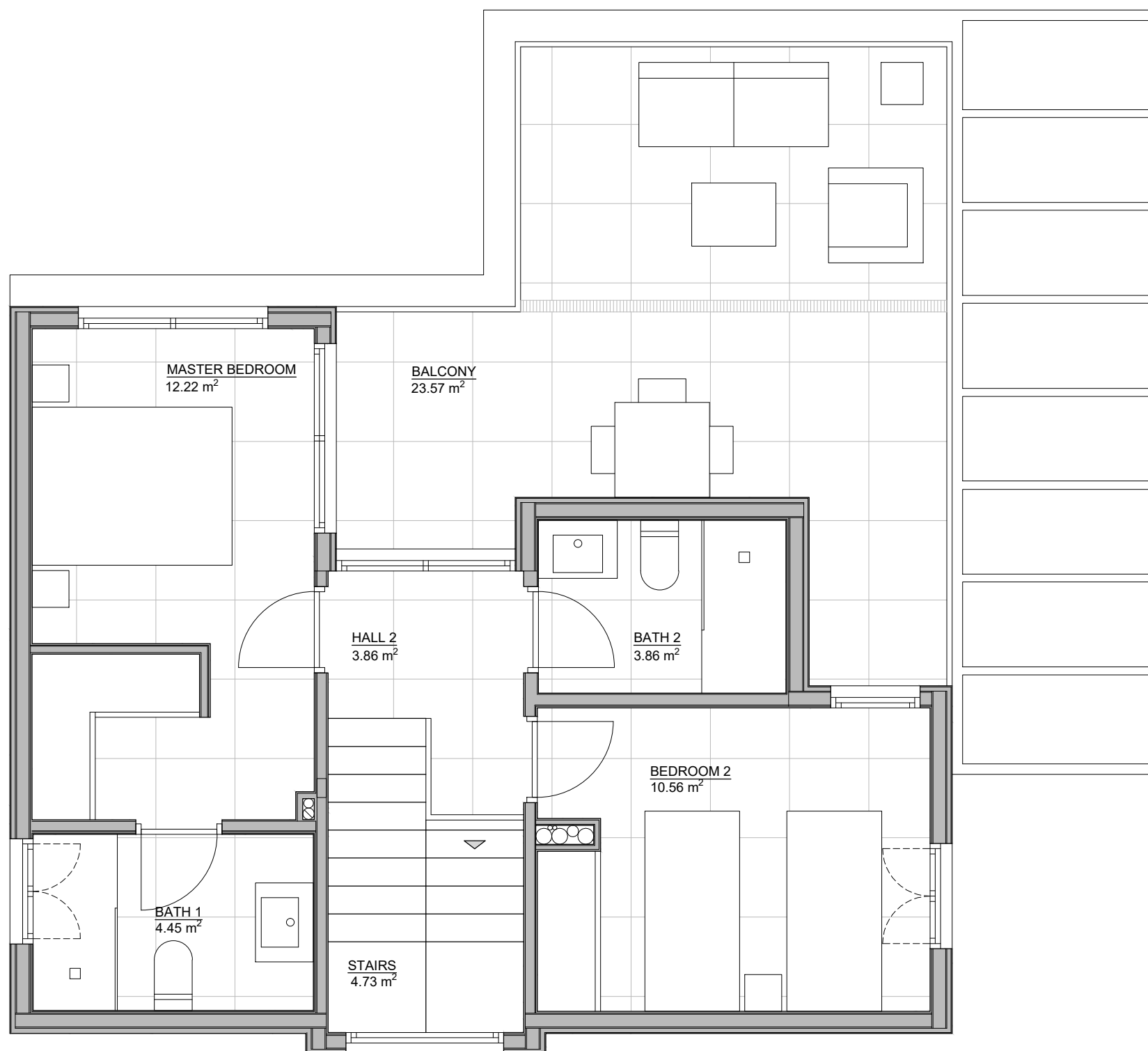
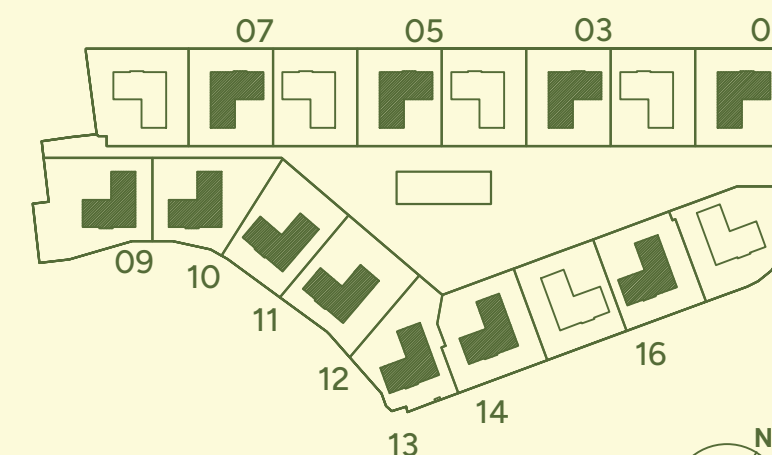
ECOGREEN17

AREA

BUILT AREA:	111,69 m ²
LIVING AREA:	95,29 m ²
TERRACE AREA:	34,15 m ²



LIVING TYPE B:
1,3,5,7,9,10,11,12,13,14 y 16



- NEV FRIDGE
- AERO AEROTHERMY
- LAV DISHWASHER
- L WASHING MACHINE
- H+M OVEN+MICROWAVE
- V WINE STORE

FIRST FLOOR



Due to project requirements, this document may undergo variations.

The surfaces are approximate and may undergo modifications in the development of the execution of the work for technical reasons.



azur
HOMES

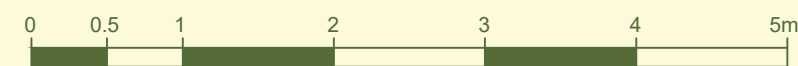
RESIDENTIAL



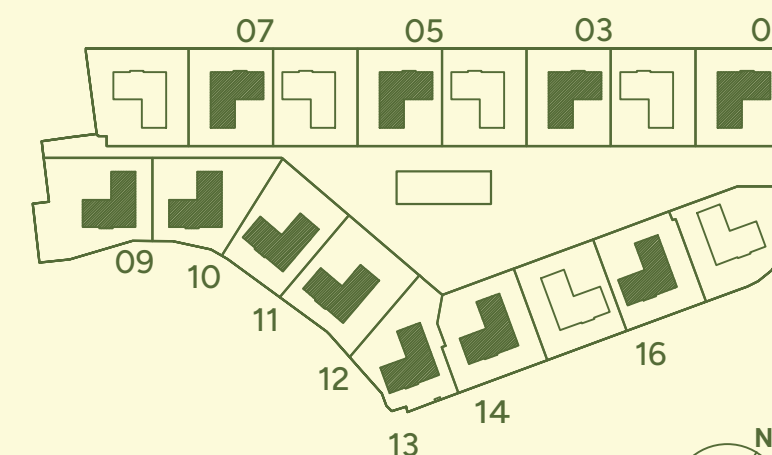
ECOGREEN17

AREA

BUILT AREA:	111,69 m ²
LIVING AREA:	95,29 m ²
TERRACE AREA:	34,15 m ²



LIVING TYPE B:
1,3,5,7,9,10,11,12,13,14 y 16



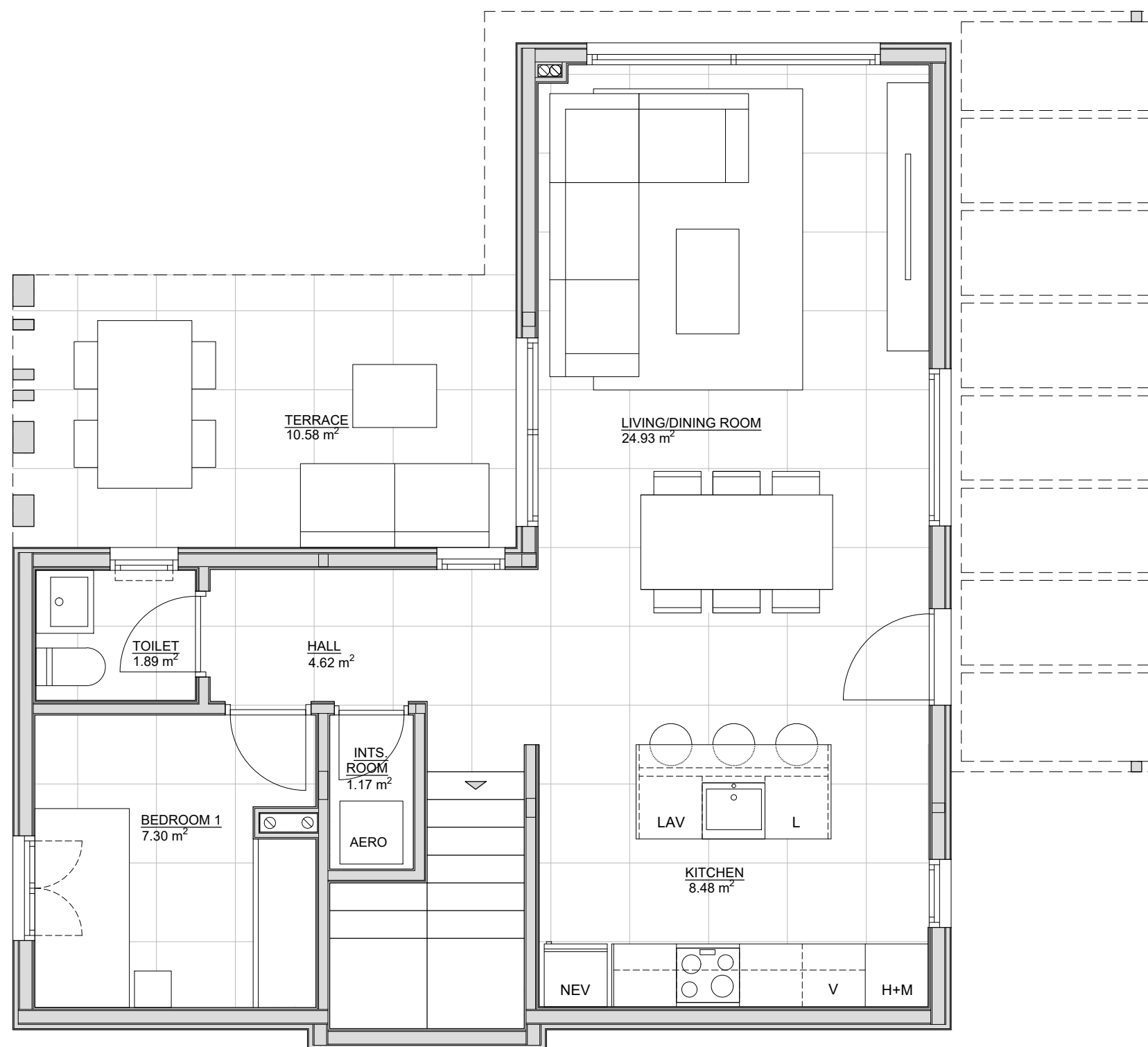
- NEV FRIDGE
- AERO AEROTHERMY
- LAV DISHWASHER
- L WASHING MACHINE
- H+M OVEN+MICROWAVE
- V WINE STORE

BASEMENT



Due to project requirements, this document may undergo variations.

The surfaces are approximate and may undergo modifications in the development of the execution of the work for technical reasons.





azur
HOMES

RESIDENTIAL



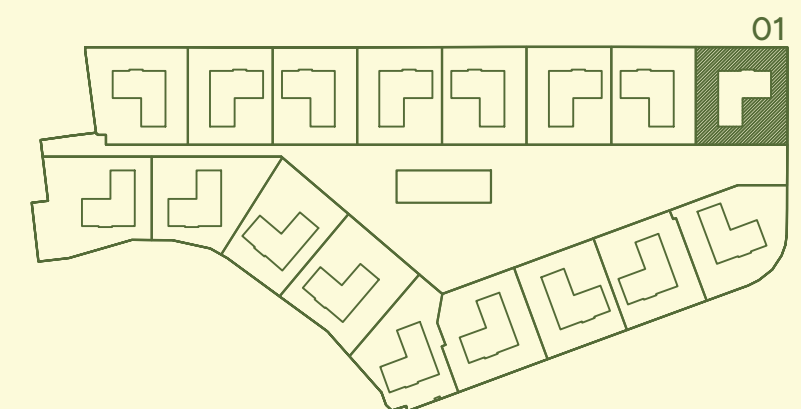
ECOGREEN17

AREA

BUILT AREA:	111,69 m ²
LIVING AREA:	95,29 m ²
TERRACE AREA:	34,15 m ²
PRIVATE PLOT AREA:	255,70 m ²
PLOT AREA WITH C.E.	333,64 m ²



LIVING 1 TYPE B



Due to project requirements, this document may undergo variations.

The surfaces are approximate and may undergo modifications in the development of the execution of the work for technical reasons.



azur
HOMES

RESIDENTIAL



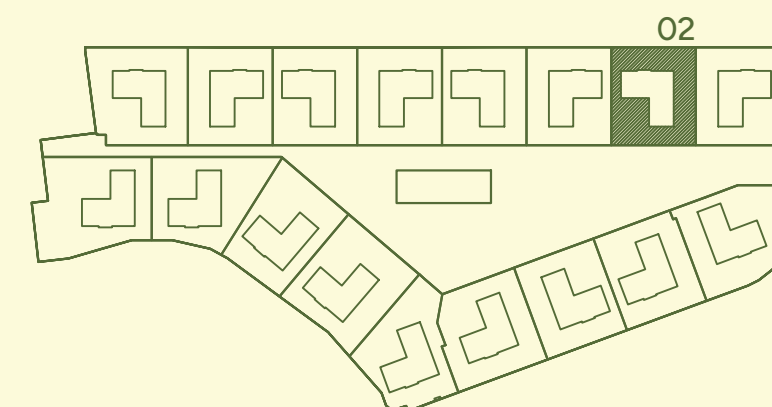
ECOGREEN17

AREA

BUILT AREA:	111,69 m ²
LIVING AREA:	95,29 m ²
TERRACE AREA:	34,15 m ²
PRIVATE PLOT AREA:	237,32 m ²
PLOT AREA WITH C.E.	315,26 m ²



LIVING 2 TYPE A



Due to project requirements, this document may undergo variations.

The surfaces are approximate and may undergo modifications in the development of the execution of the work for technical reasons.



azur
HOMES

RESIDENTIAL



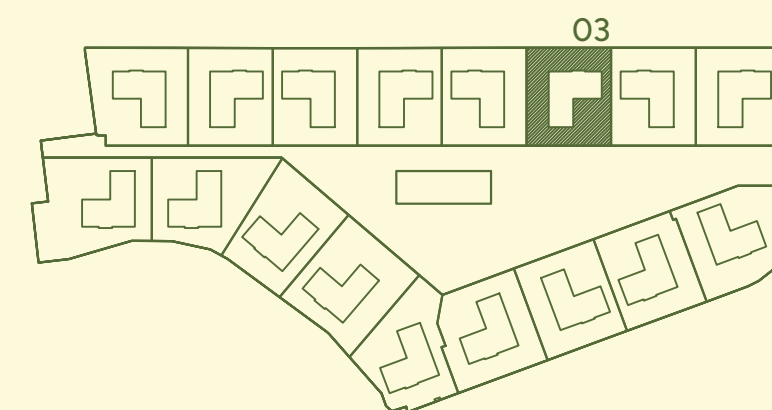
ECOGREEN17

AREA

BUILT AREA:	111,69 m ²
LIVING AREA:	95,29 m ²
TERRACE AREA:	34,15 m ²
PRIVATE PLOT AREA:	237,16 m ²
PLOT AREA WITH C.E.	315,10 m ²



LIVING 3 TYPE B



Due to project requirements, this document may undergo variations.

The surfaces are approximate and may undergo modifications in the development of the execution of the work for technical reasons.



azur
HOMES

RESIDENTIAL



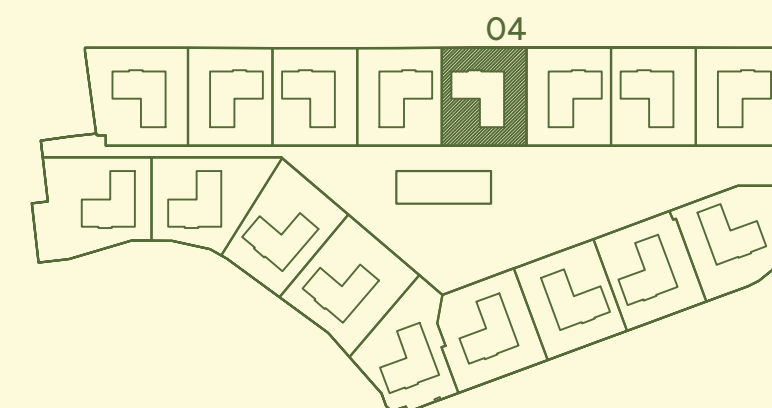
ECOGREEN17

AREA

BUILT AREA:	111,69 m ²
LIVING AREA:	95,29 m ²
TERRACE AREA:	34,15 m ²
PRIVATE PLOT AREA:	236,87 m ²
PLOT AREA WITH C.E.	314,81 m ²



LIVING 4 TYPE A



Due to project requirements, this document may undergo variations.

The surfaces are approximate and may undergo modifications in the development of the execution of the work for technical reasons.



azur
HOMES

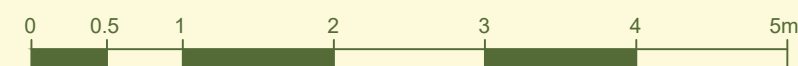
RESIDENTIAL



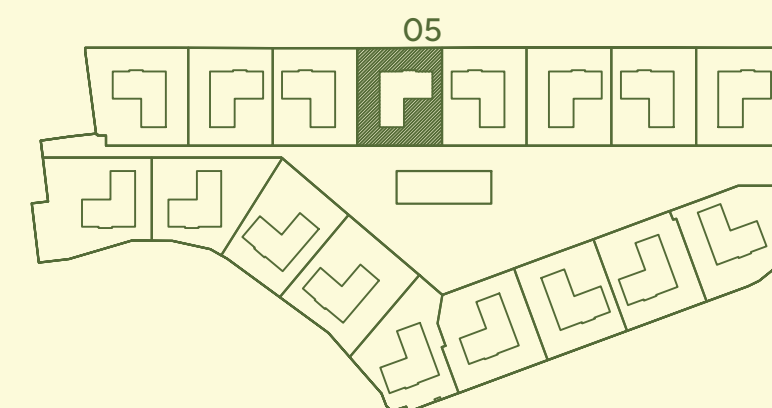
ECOGREEN17

AREA

BUILT AREA:	111,69 m ²
LIVING AREA:	95,29 m ²
TERRACE AREA:	34,15 m ²
PRIVATE PLOT AREA:	236,31 m ²
PLOT AREA WITH C.E.	314,25 m ²

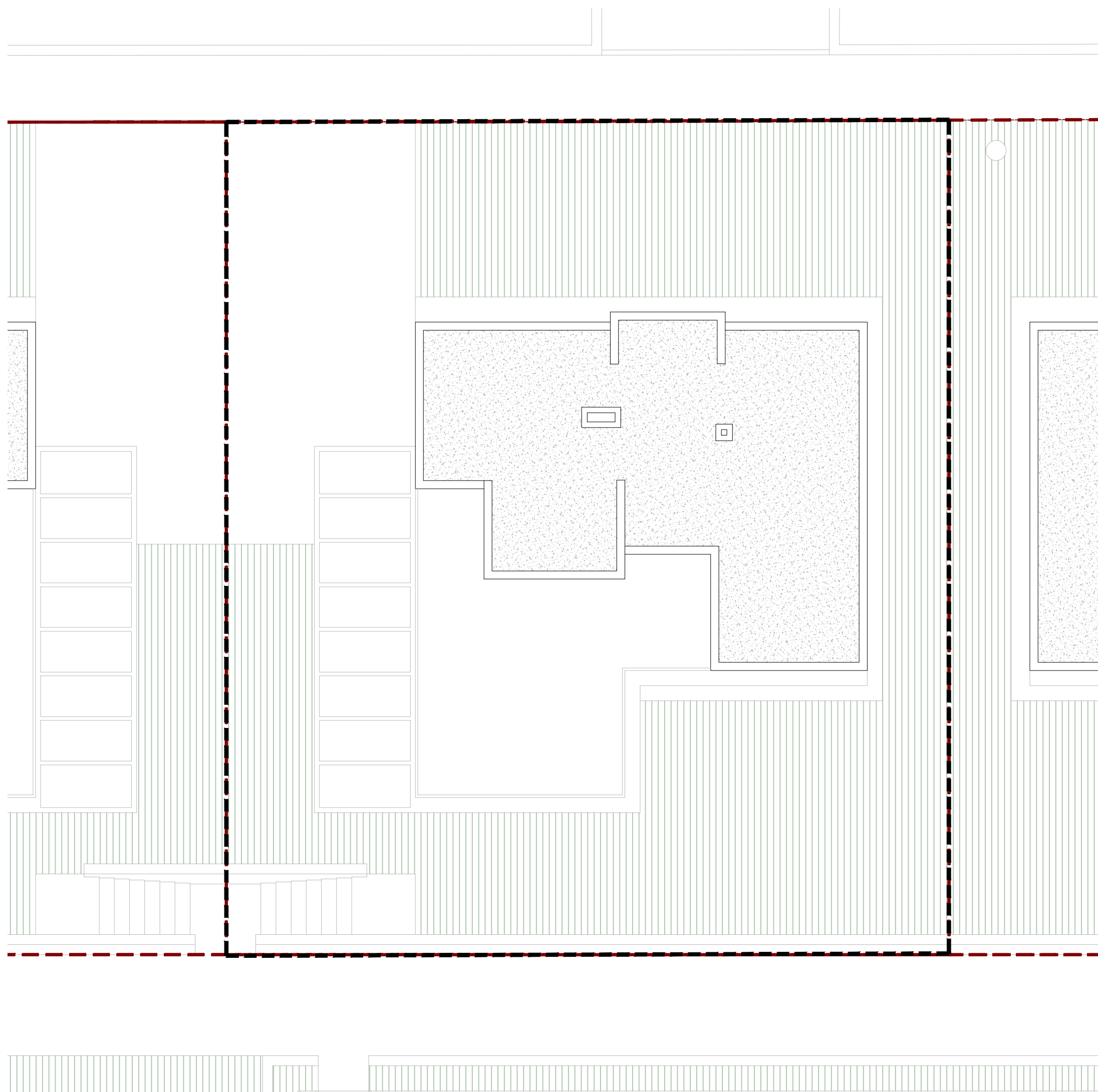


LIVING 5
TYPE B



Due to project requirements, this document may undergo variations.

The surfaces are approximate and may undergo modifications in the development of the execution of the work for technical reasons.





azur
HOMES

RESIDENCIAL



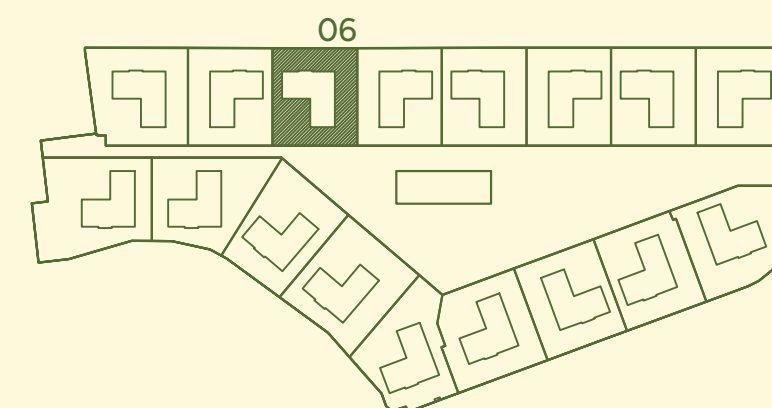
ECOGREEN17

AREA

BUILT AREA:	111,69 m ²
LIVING AREA:	95,29 m ²
TERRACE AREA:	34,15 m ²
PRIVATE PLOT AREA:	235,97 m ²
PLOT AREA WITH C.E.	313,91 m ²

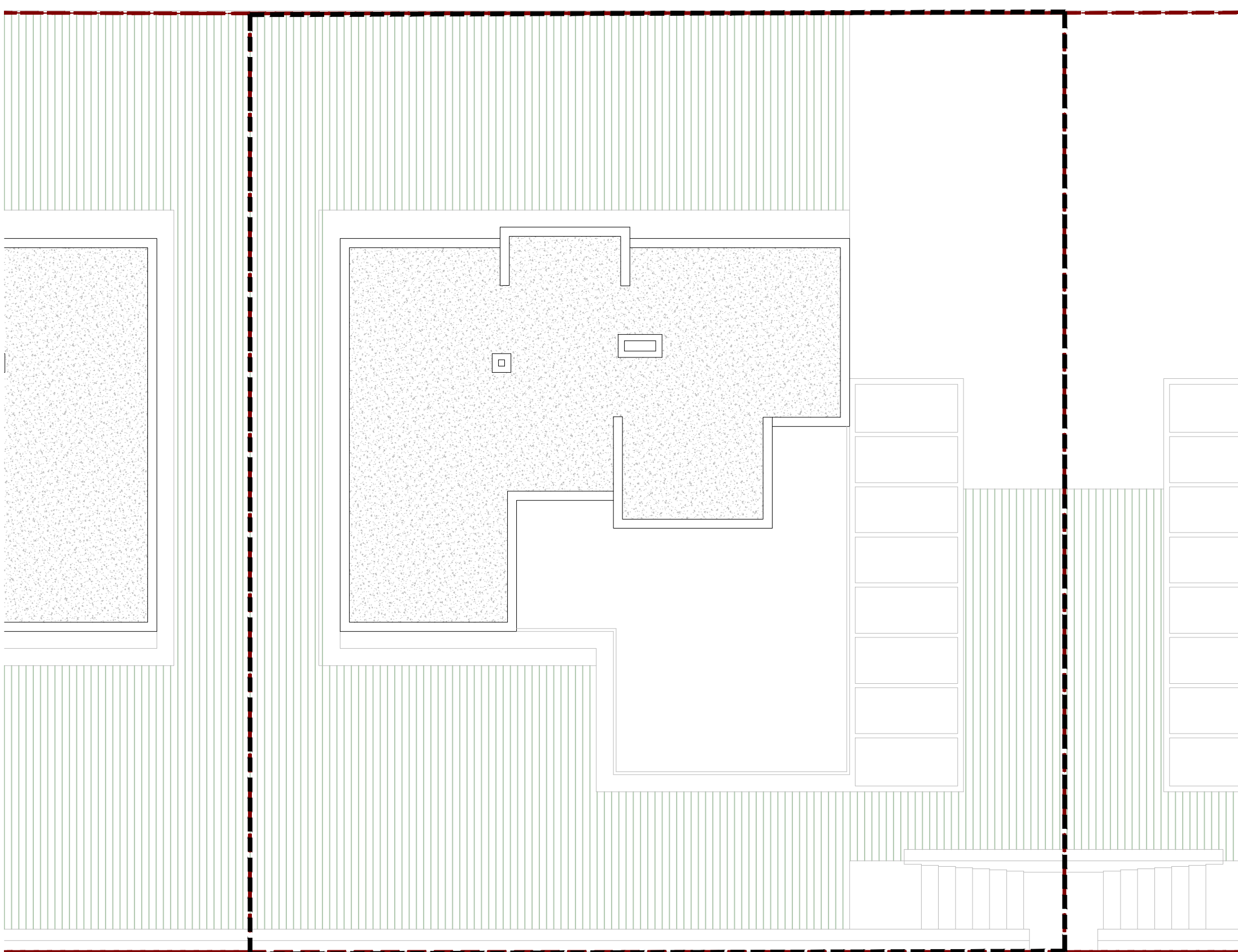


VIVIENDA 6
TYPE A



Due to project requirements, this document may undergo variations.

The surfaces are approximate and may undergo modifications in the development of the execution of the work for technical reasons.





azur
HOMES

RESIDENTIAL



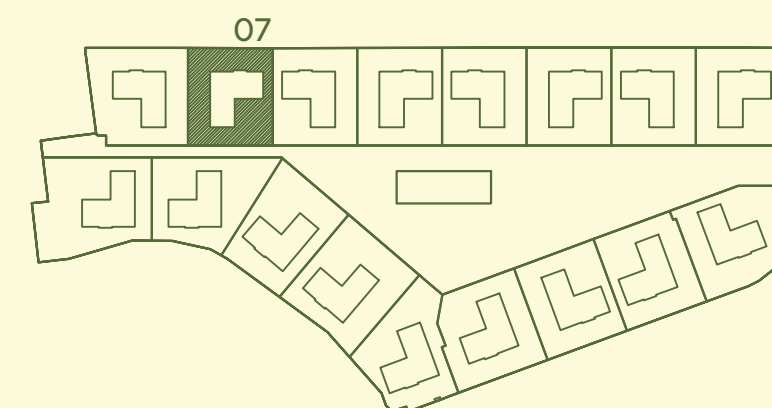
ECOGREEN17

AREA

BUILT AREA:	111,69 m ²
LIVING AREA:	95,29 m ²
TERRACE AREA:	34,15 m ²
PRIVATE PLOT AREA:	236,18 m ²
PLOT AREA WITH C.E.	314,12 m ²



LIVING 7 TYPE B



Due to project requirements, this document may undergo variations.

The surfaces are approximate and may undergo modifications in the development of the execution of the work for technical reasons.



azur
HOMES

RESIDENTIAL



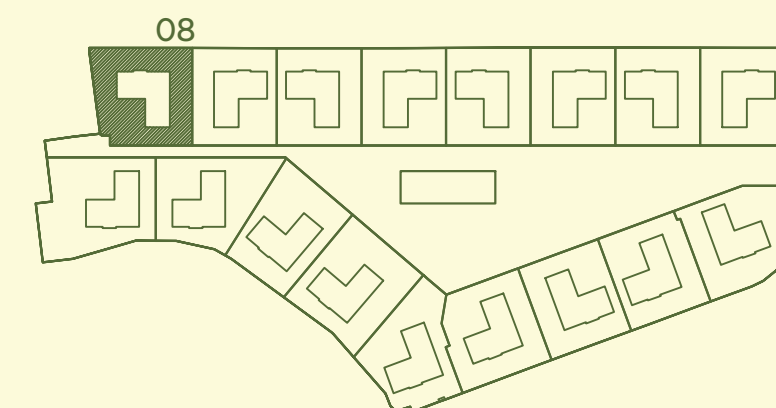
ECOGREEN17

AREA

BUILT AREA:	111,69 m ²
LIVING AREA:	95,29 m ²
TERRACE AREA:	34,15 m ²
PRIVATE PLOT AREA:	268,13 m ²
PLOT AREA WITH C.E.	346,07 m ²



LIVING 8 TYPE A



Due to project requirements, this document may undergo variations.

The surfaces are approximate and may undergo modifications in the development of the execution of the work for technical reasons.



azur
HOMES

RESIDENTIAL



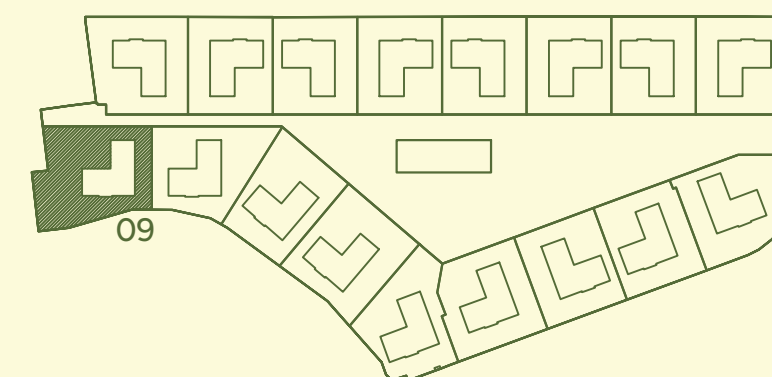
ECOGREEN17

AREA

BUILT AREA:	111,69 m ²
LIVING AREA:	95,29 m ²
TERRACE AREA:	34,15 m ²
PRIVATE PLOT AREA:	300,24 m ²
PLOT AREA WITH C.E.	378,18 m ²

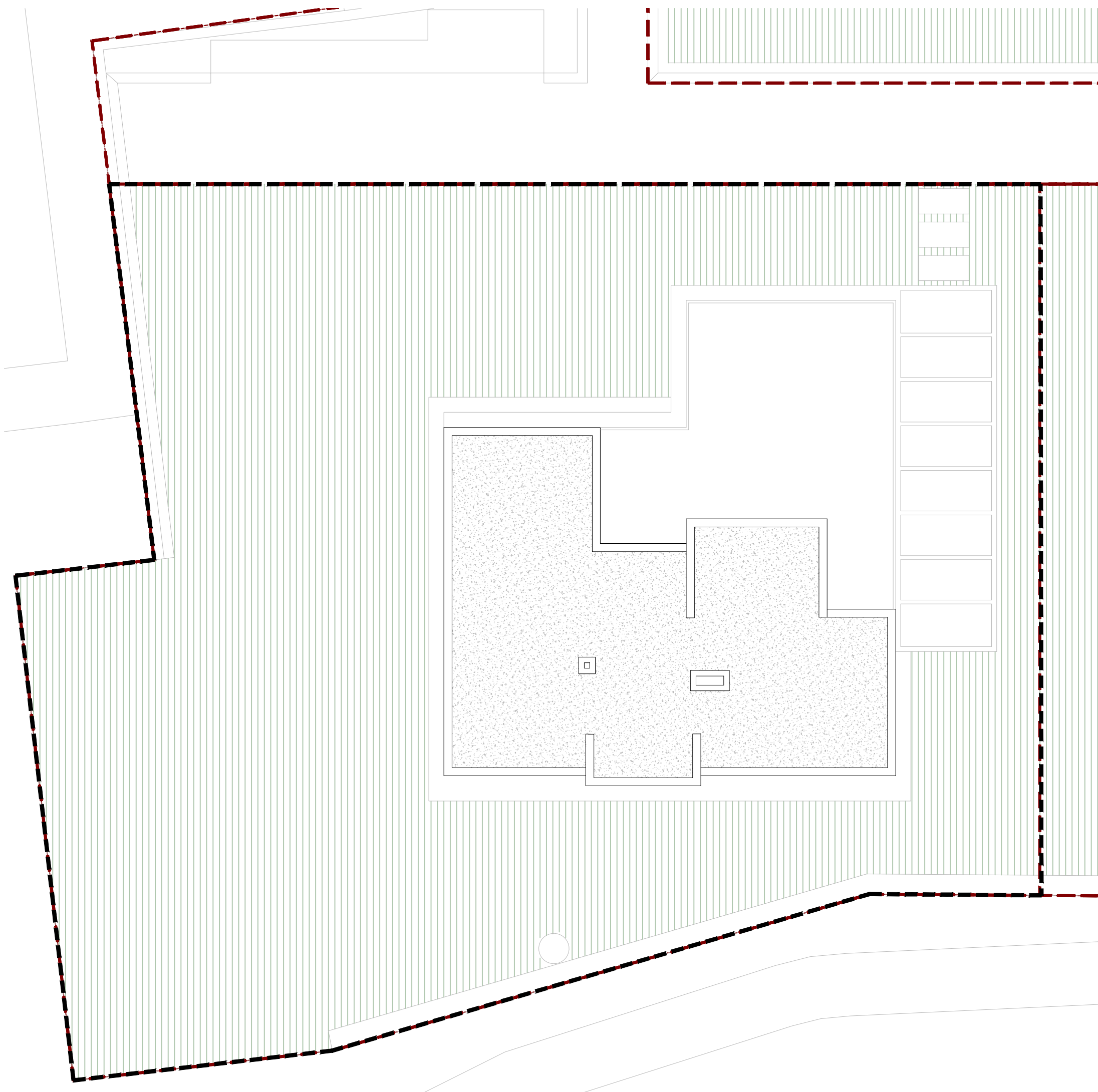


LIVING 9
TYPE B



Due to project requirements, this document may undergo variations.

The surfaces are approximate and may undergo modifications in the development of the execution of the work for technical reasons.





azur
HOMES

RESIDENTIAL



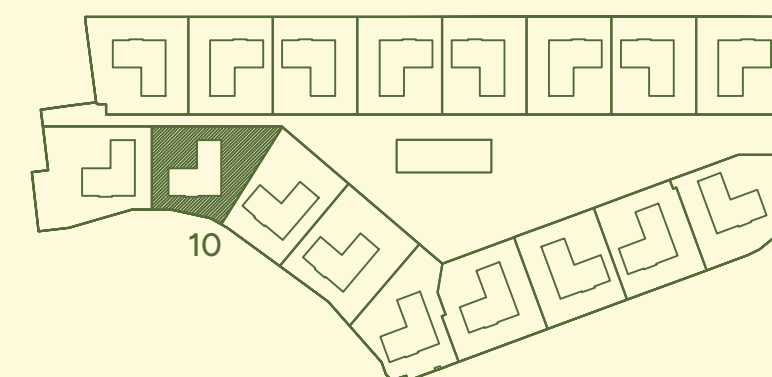
ECOGREEN17

AREA

BUILT AREA:	111,69 m ²
LIVING AREA:	95,29 m ²
TERRACE AREA:	34,15 m ²
PRIVATE PLOT AREA:	260,09 m ²
PLOT AREA WITH C.E.	338,03 m ²



LIVING 10
TYPE B



Due to project requirements, this document may undergo variations.

The surfaces are approximate and may undergo modifications in the development of the execution of the work for technical reasons.