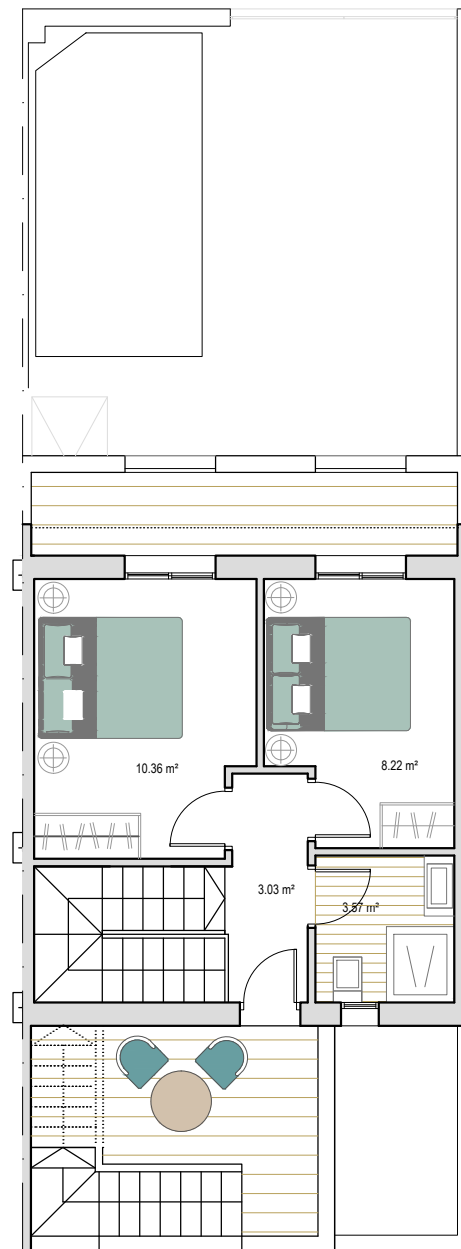
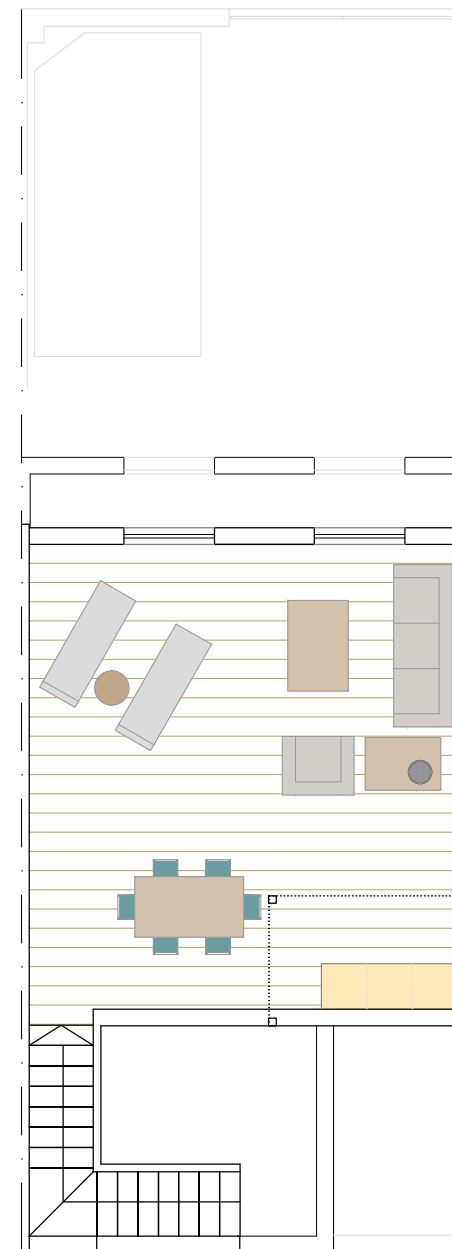


Planta baja



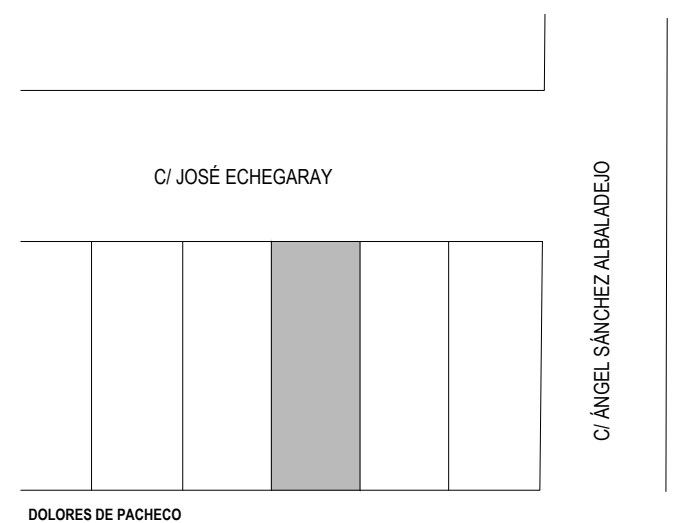
Planta primera

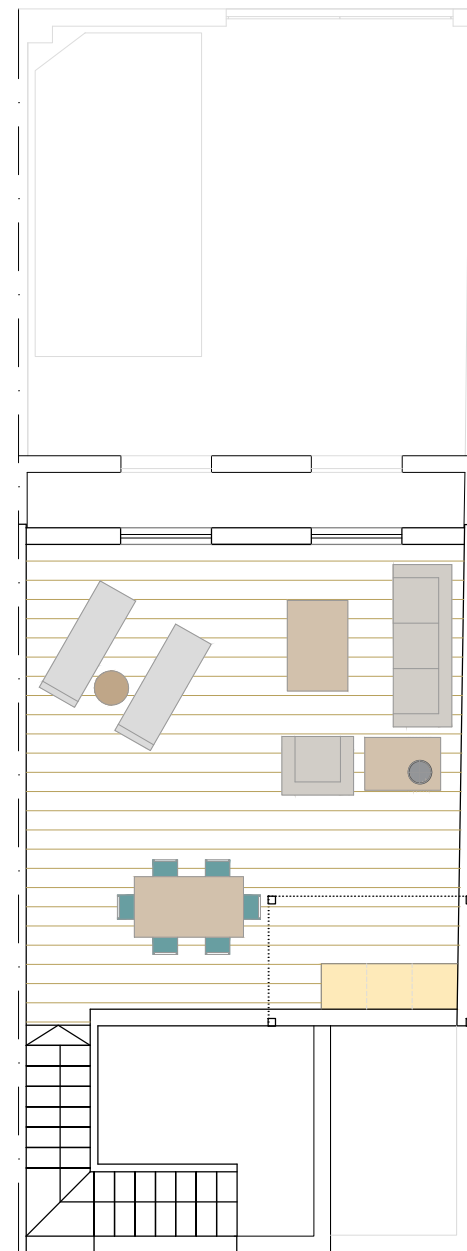
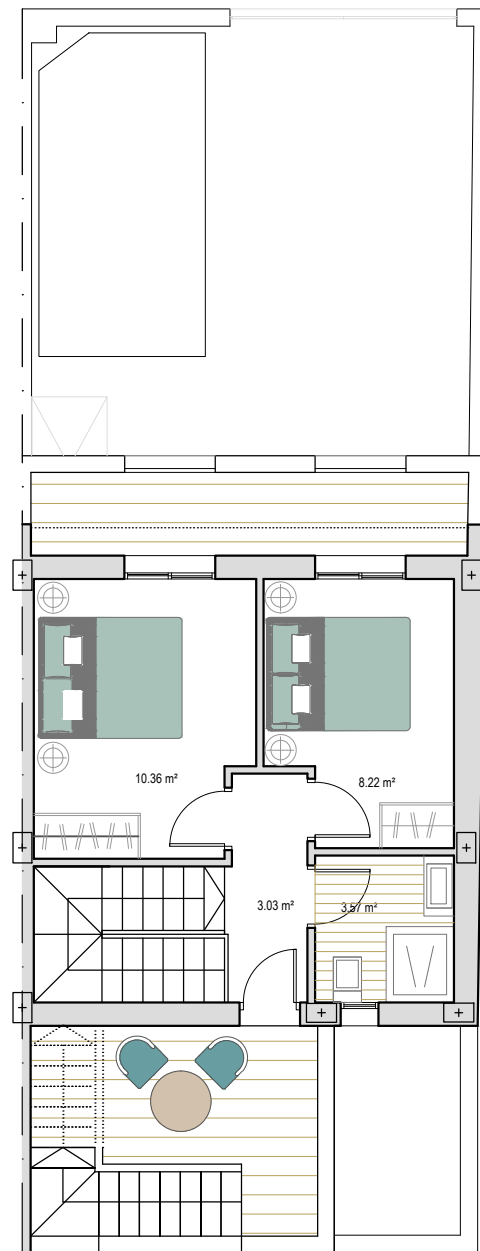
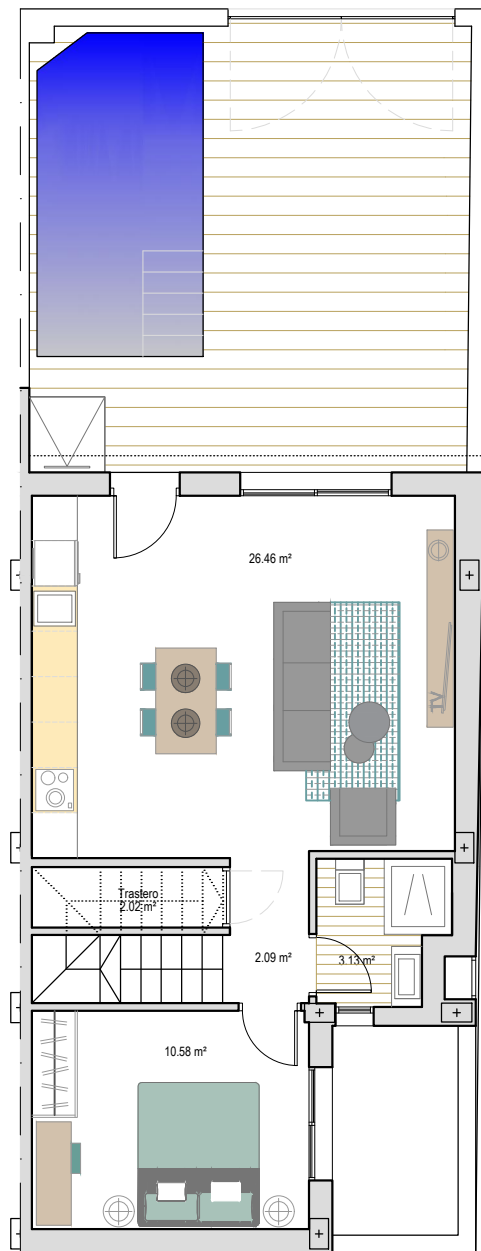


Cubierta

LA PINADA VIVIENDA 16

| | |
|-----------------------------|-----------------------------|
| Sup. Construida P. Baja: | 55'34 m ² |
| Sup. Construida P. Primera: | 36'50 m ² |
| Sup. Construida | 91'84 m² |
| Sup. Jardín: | 24'59 m ² |
| Sup. Piscina: | 9.25 m ² |
| Sup. Patio: | 4'73 m ² |
| Sup. terraza trasera: | 10'56 m ² |
| Sup. terraza frontal: | 6'20 m ² |
| Sup. Solarium: | 34'05 m ² |
| TOTAL: | 181'22 m² |
| Sup. Parcela: | 96.54 m ² |





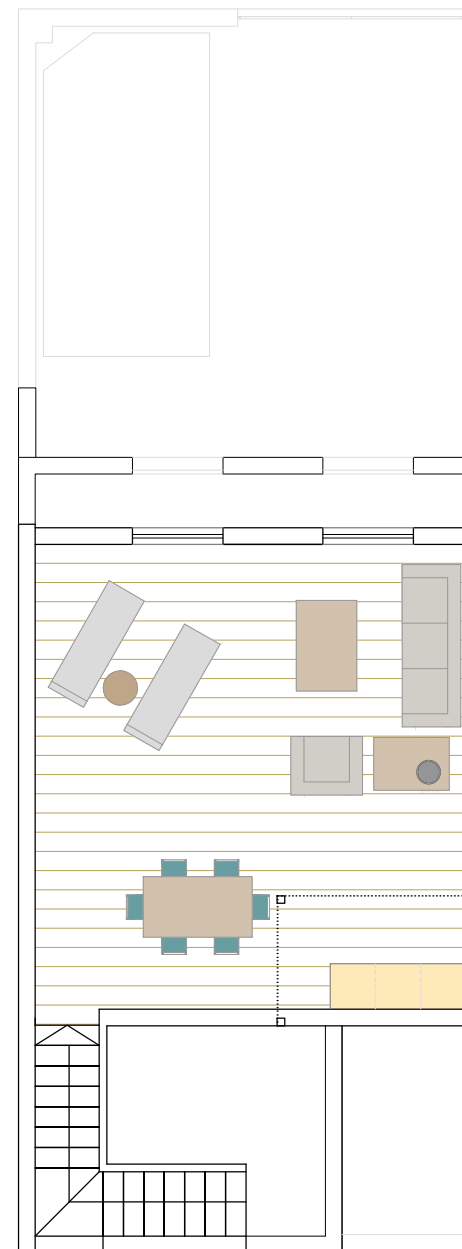
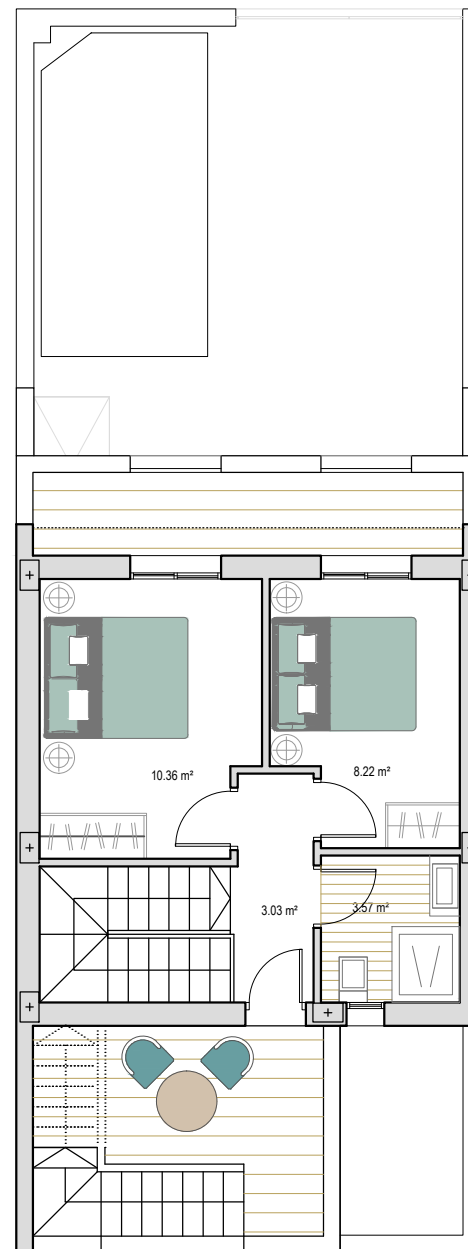
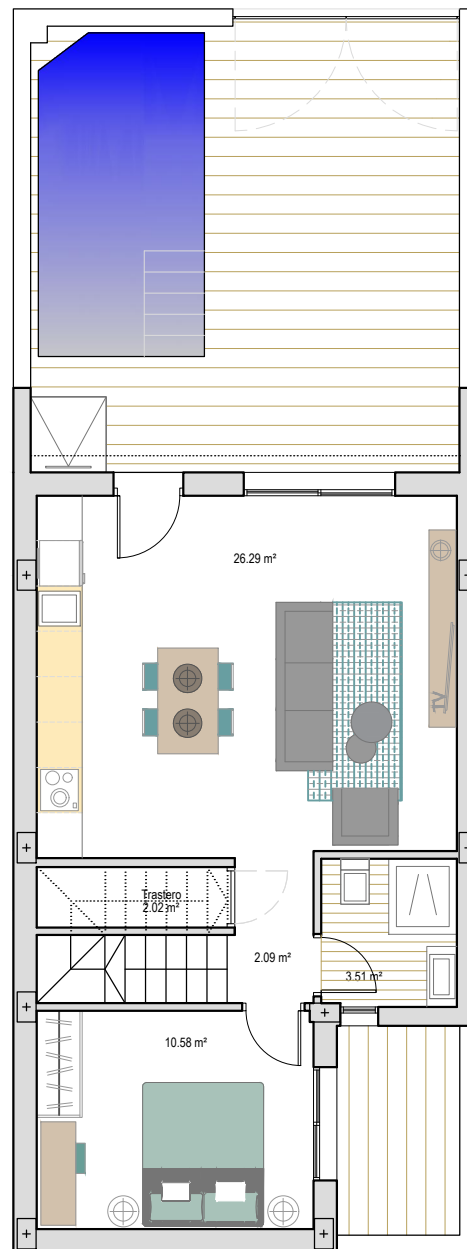
LA PINADA VIVIENDA 20

| | |
|-----------------------------|-----------------------------|
| Sup. Construida P. Baja: | 56'89 m ² |
| Sup. Construida P. Primera: | 37'75 m ² |
| Sup. Construida | 94'64 m² |
| Sup. Jardín: | 25'70 m ² |
| Sup. Piscina: | 9.25 m ² |
| Sup. Patio: | 5'11 m ² |
| Sup. terraza trasera: | 10'56 m ² |
| Sup. terraza frontal: | 6'36 m ² |
| Sup. Solarium: | 35'26 m ² |
| TOTAL: | 186'68 m² |
| Sup. Parcela: | 100.00 m ² |

C/ JOSÉ ECHEGARAY

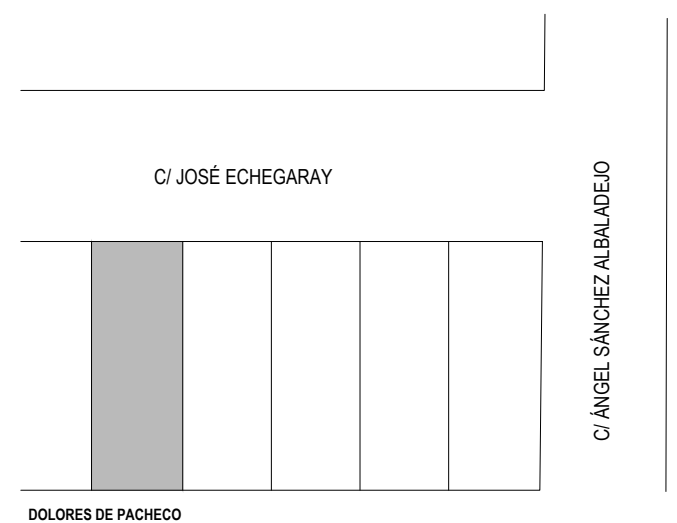
C/ ÁNGEL SÁNCHEZ ALBALADEJO

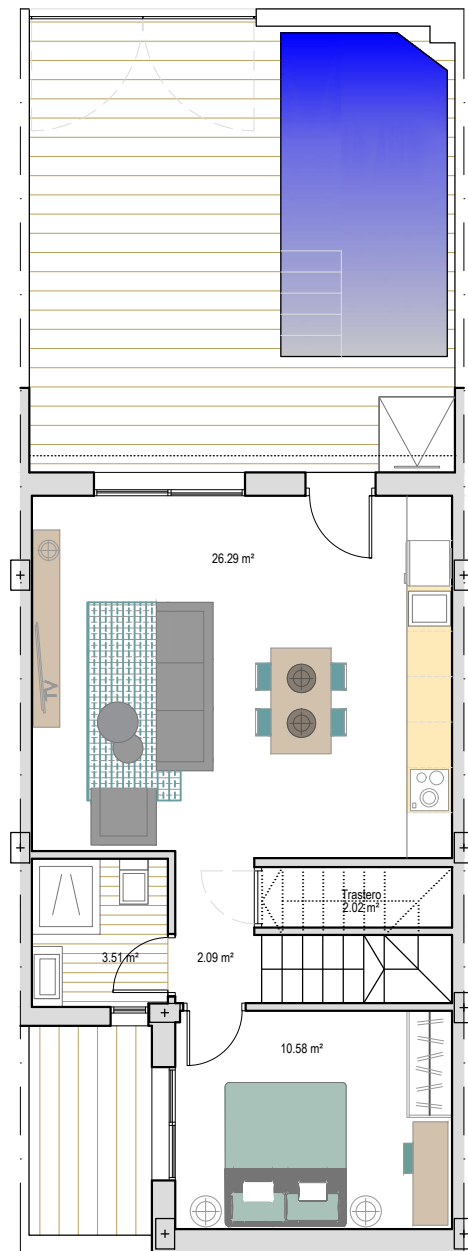
DOLORES DE PACHECO



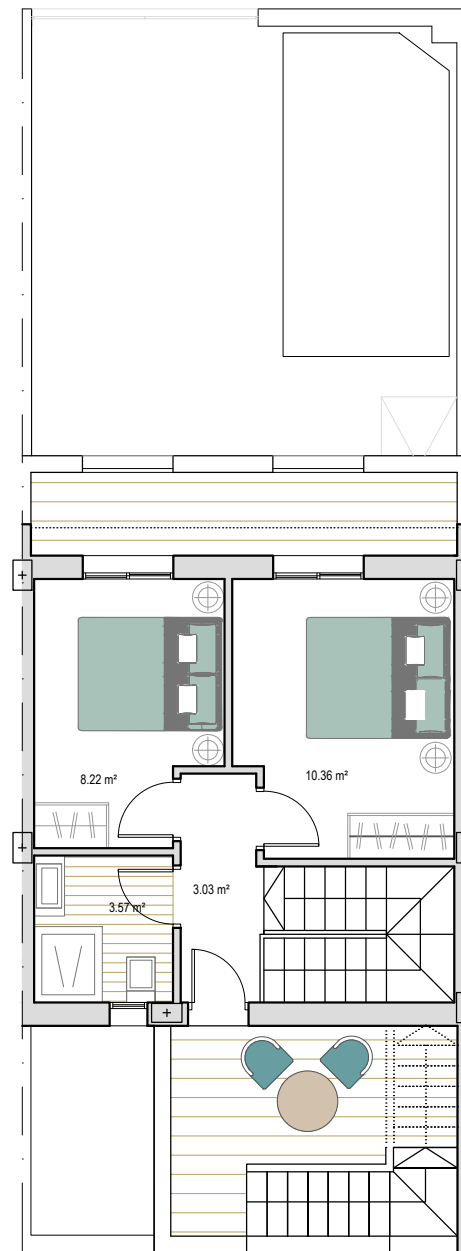
LA PINADA VIVIENDA 12

| | |
|-----------------------------|-----------------------------|
| Sup. Construida P. Baja: | 56'94 m ² |
| Sup. Construida P. Primera: | 37'46 m ² |
| Sup. Construida | 94'40 m² |
| Sup. Jardín: | 24'86 m ² |
| Sup. Piscina: | 9.25 m ² |
| Sup. Patio: | 4'73 m ² |
| Sup. terraza trasera: | 10'68 m ² |
| Sup. terraza frontal: | 6'25 m ² |
| Sup. Solarium: | 34'99 m ² |
| TOTAL: | 185'16 m² |
| Sup. Parcela: | 99.09 m ² |

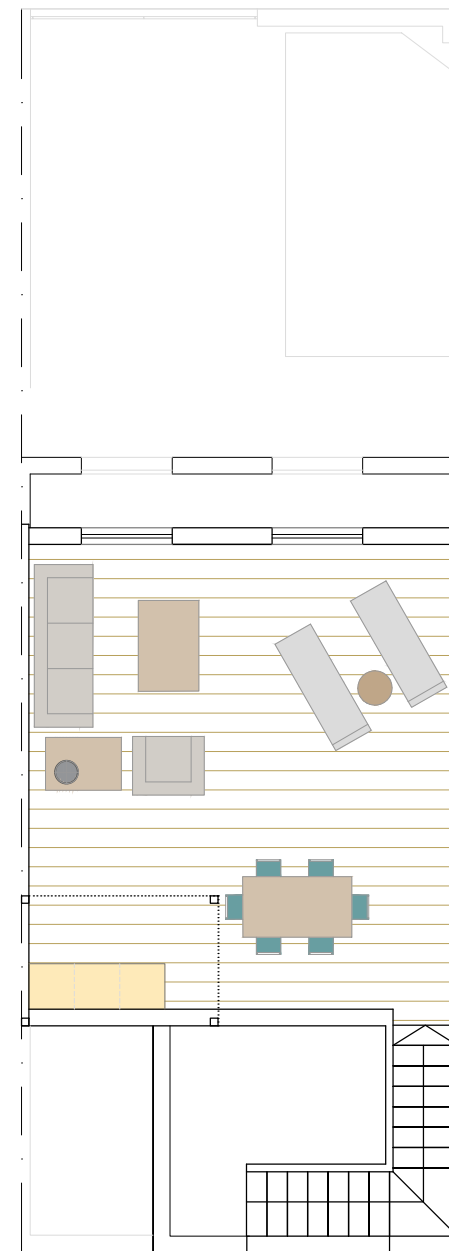




Planta baja



Planta primera



Cubierta

LA PINADA VIVIENDA 14

| | |
|-----------------------------|-----------------------------|
| Sup. Construida P. Baja: | 55'34 m ² |
| Sup. Construida P. Primera: | 36'50 m ² |
| Sup. Construida | 91'84 m² |
| Sup. Jardín: | 24'59 m ² |
| Sup. Piscina: | 9.25 m ² |
| Sup. Patio: | 4'73 m ² |
| Sup. terraza trasera: | 10'56 m ² |
| Sup. terraza frontal: | 6'20 m ² |
| Sup. Solarium: | 34'05 m ² |
| TOTAL: | 181'22 m² |
| Sup. Parcela: | 96.54 m ² |

