

Adagio.
ahora sí
Quality memory.



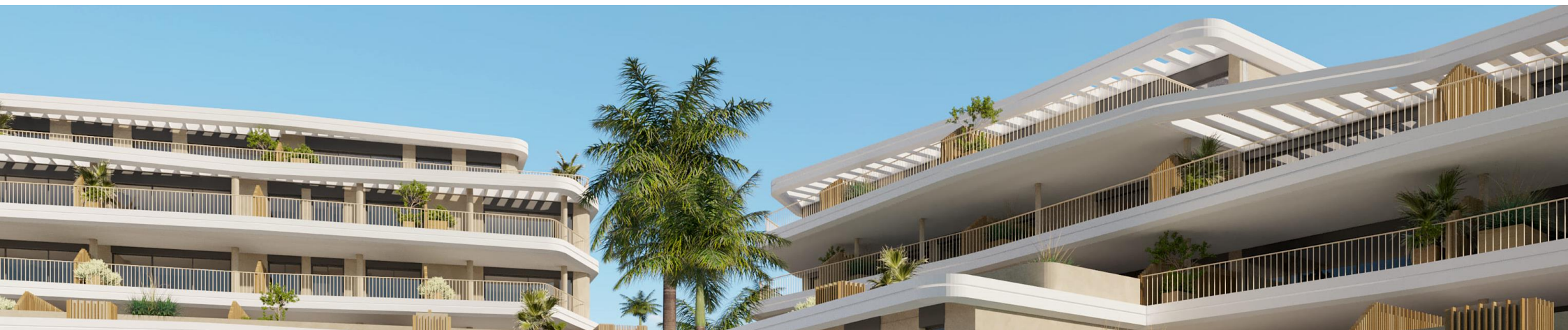


Quality and comfort

The quality of the materials chosen, together with the representative designs we work with, generate unique homes.

We collaborate with the best architects and interior designers so that you can enjoy a home that really changes your life.





Índice

- | | | | | | | | |
|---|---------------------------|----|-----------------------------|----|---|----|-------------------------|
| 1 | Foundations and structure | 6 | Partitioning and insulation | 11 | False ceilings and painting | 16 | Garage and storage room |
| 2 | Façade | 7 | Flooring and cladding | 12 | Electricity, T.V. and telephone installations | 17 | Club House |
| 3 | Roof | 8 | Bathrooms | 13 | Heating, air conditioning and hot water | 18 | Energetic qualification |
| 4 | Exterior carpentry | 9 | Sanitary equipment and taps | 14 | Ventilation and extraction system | | |
| 5 | Interior carpentry | 10 | Kitchen | 15 | Access and common areas | | |

1 Foundations and structure

Both the foundations and the structure will be made of reinforced concrete.

2 Façade

External enclosures of dwellings will be made with continuous coating and plastic paint, high-performance thermal insulation, air chamber and interior lining of plasterboard partitions with thermal insulation.

3 Roof

Non-trafficable roofs will be built with thermal insulation and gravel protection.

The terraces of the dwellings will be tiled with exterior stoneware.

4 Exterior carpentry

Throughout the house, windows and exterior doors with aluminium profiles with thermal bridge break, thermo-acoustic double glazing, blinds in bedrooms with aluminium slats with thermal insulation inside with insulated blind boxes.

Double-glazed aluminium joinery
with thermal break.

Modern design and
attractive volumetry.





Indicative and not real images

Interior lined modular
cabinets

5 Interior carpentry

Access to the property via armoured door with security lock finished with lacquered panelling to match the interior carpentry.

Smooth lacquered interior doors.

Modular wardrobes with hinged doors lacquered to match the rest of the carpentry, lined on the inside including luggage shelf and hanging bar.

6 Partitioning and insulation

The dividing walls between the different dwellings will be built with brick or plasterboard partitioning system, complying with current acoustic regulations, lined on both sides with plasterboard partitioning on both sides with thermal insulation on the inside.

Adequate thermal and
acoustic comfort.



Indicative and not real images



7 Floor and wall coverings

For the flooring in the house and bathroom we will use porcelain stoneware and skirting board of the same quality.

The bathrooms will be tiled with porcelain stoneware with skirting board of the same quality in the areas finished with paint.

The solariums and terraces for private use will be tiled with exterior stoneware.

General flooring of the house and terrace:



SALONI

Rectified porcelain tile
ROCKWELL 75X75 BLANCO

Optionals



SALONI

Rectified porcelain tile
ROCKWELL 75X75 MARFIL

Imágenes orientativas y no reales



8 Bathrooms

The vertical surfaces of bathrooms and toilets will be tiled with porcelain stoneware in the bath and shower area and finished with plastic paint on the rest of the surfaces.

Mirror over washbasin in main and secondary bathrooms.

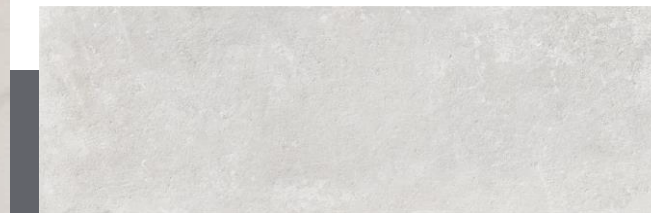
Bathroom cladding:



SALONI

Rectified porcelain tile
ATENEO 40X120
BLANCO MATE

Optionals



SALONI


Rectified porcelain tile
ROCKWELL 40X120
BLANCO



SALONI

Rectified porcelain tile
ROCKWELL 40X120
MARFIL

Imágenes orientativas y no reales

A modern kitchen and dining area. The kitchen features white upper cabinets, a light wood lower cabinet, and a white countertop with a sink and faucet. A glass dining table with gold legs and white chairs is in the foreground. The floor is light-colored tile.

Spaciousness in the rooms to make your life more comfortable.

9 Sanitary equipment and taps

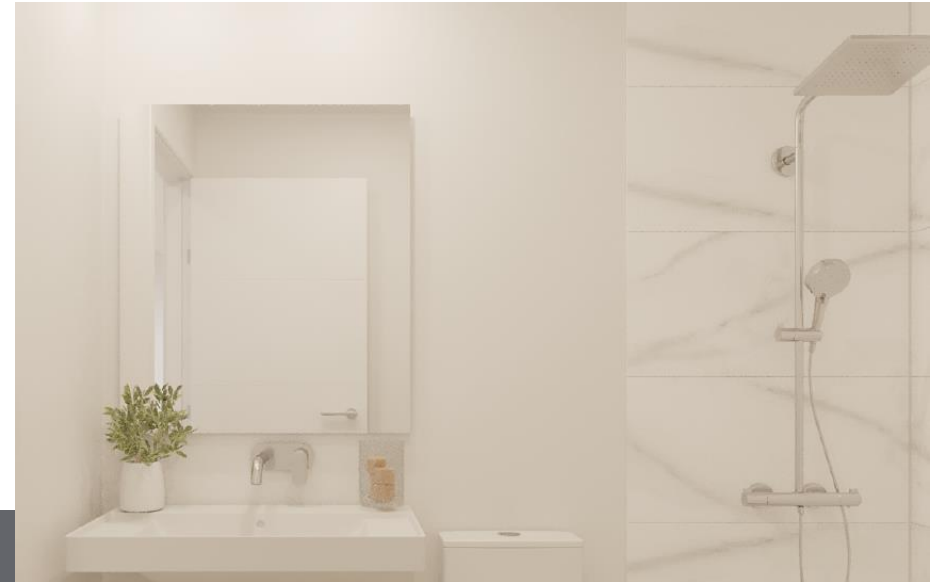
In bathrooms, vitrified porcelain sanitary ware.

In main bathroom, washbasin with double basin and vanity unit. In secondary bathroom, wall-hung washbasin.

The rest of the sanitary fittings will have mixer taps and thermostatic taps in the shower.

10 Kitchen

Fitted kitchen with quartz or porcelain worktop and equipped with electrical appliances.



Indicative and not real images

11 False ceilings and paintings

False ceilings with plasterboard throughout the house with registers in areas for interior air-conditioning and ventilation machines.

Smooth plastic paint on ceilings.

12 Electricity installations, T.V. and telephony

Electrical installation carried out according to R.E.B.T. with a high degree of electrification.

Top quality electrical mechanisms.

Television, telephone and telecommunications sockets in living room and bedrooms.

Electronic video intercom with call receiver and colour image.





13 Heating, air conditioning and hot water

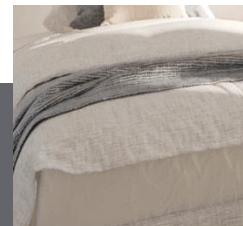
Complete air conditioning installation, with heat pump (cooling and heating) and ducts through false ceiling.

Indoor unit on false ceiling in bathrooms and outdoor unit mounted on technical roof.

Domestic hot water production system using renewable energy system. Indoor water distribution network with polyethylene pipes.

14 Ventilation and extraction system

Installation of indoor air renewal in dwellings with extraction outlets in bathrooms and kitchens.



Indicative and not real images



Indicative and not real images

A residential complex
designed for the quality
of life of its occupants.

15 Access and common areas

Communal swimming pool.

Equipped gymnasium for communal use.

Zen area for outdoor sports use.

Large garden areas designed for low water consumption.

Landscaped areas of access to the natural environment with walking and rest areas.

Automated irrigation system in communal garden areas.

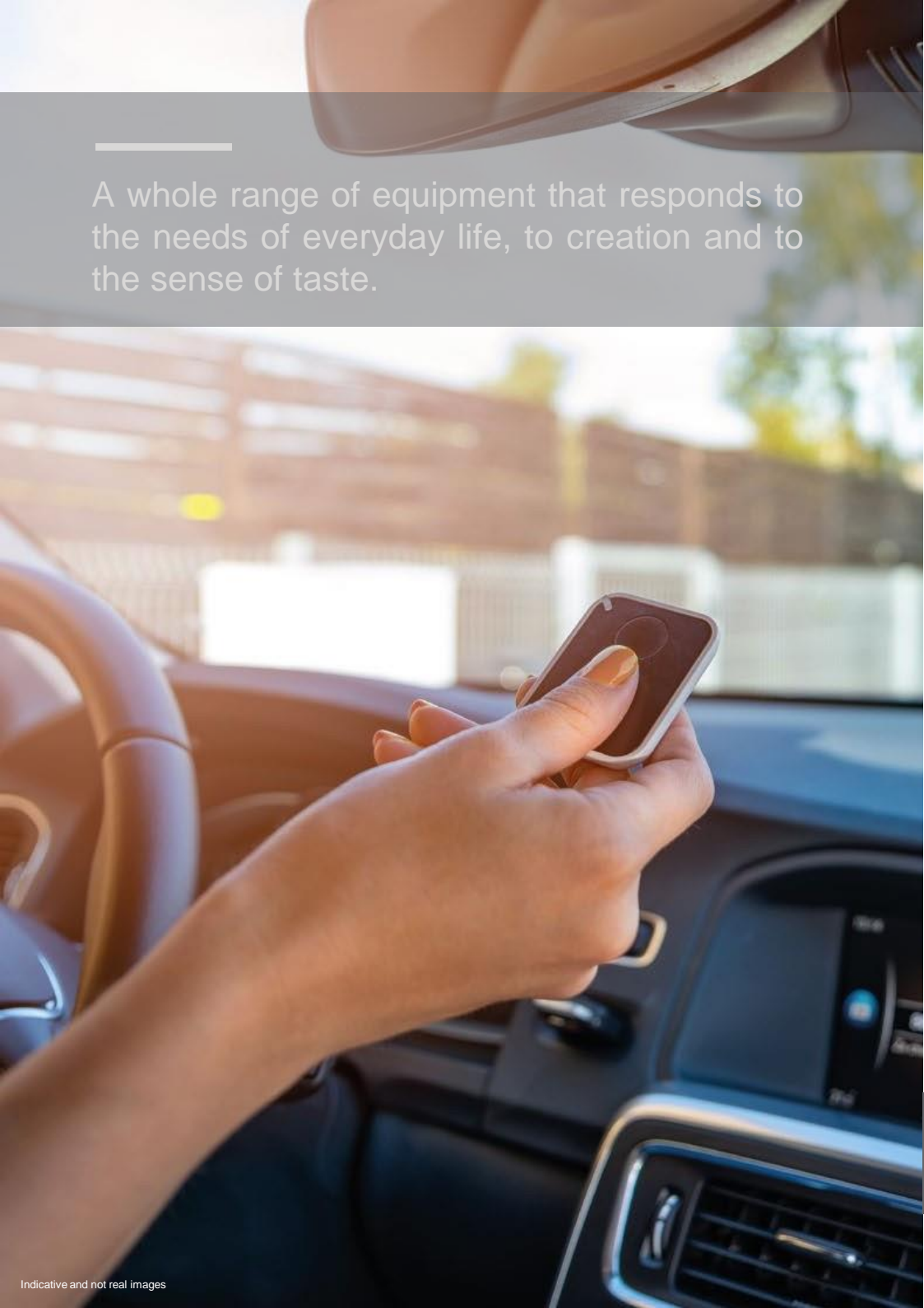
Bicycle racks at the entrance to the development.



Indicative and not real images



Indicative and not real images



A whole range of equipment that responds to the needs of everyday life, to creation and to the sense of taste.

16 Garage and storage rooms

Covered and uncovered car parks.

Concrete floor with pavement surface treatment.

Storage rooms finished with plastic paint and/or exposed concrete block.

Vertical walls of parking area with concrete walls.

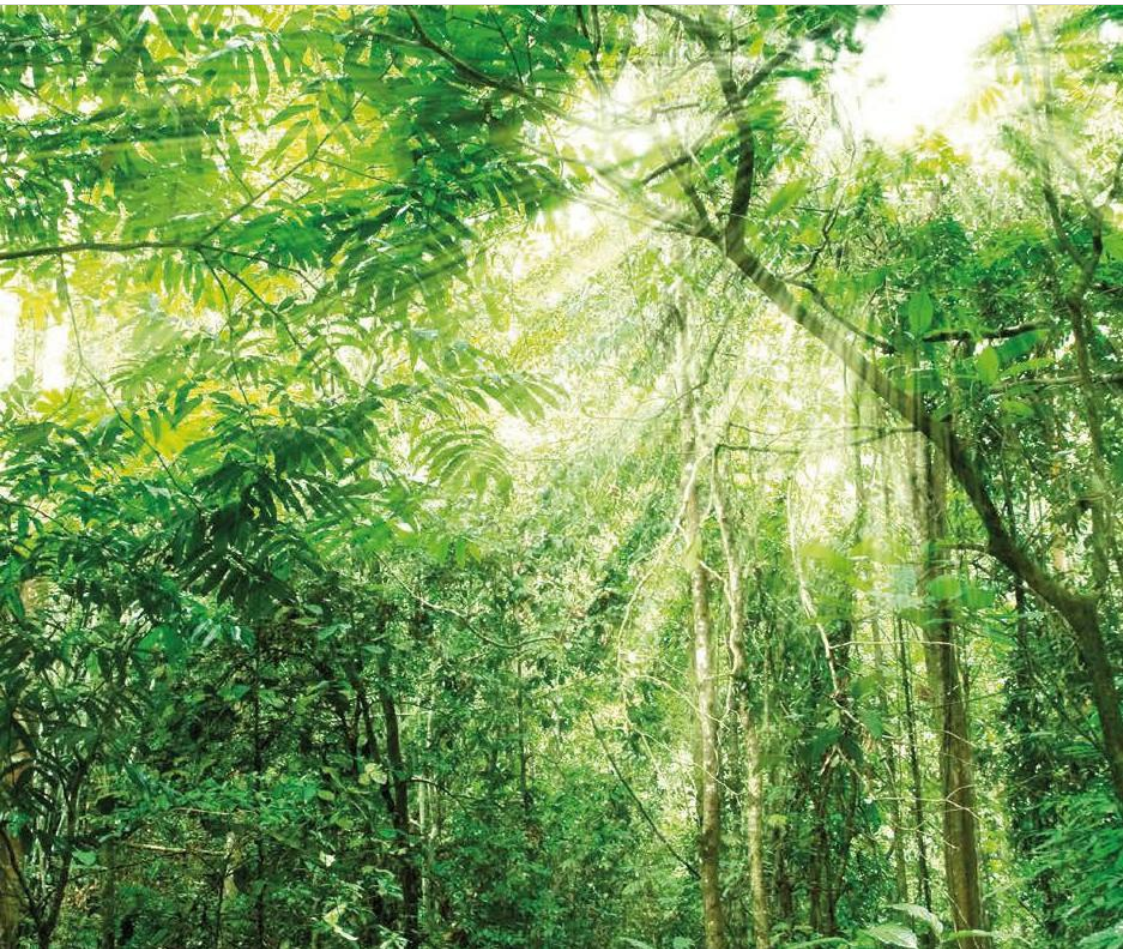
17 Club House

Acquisition of an 'ob rem' share of the CLUB HOUSE Services Building located on Plot 33 of SUP-E9 'Norte de Cancelada' together with the purchase of your home.

The Club House is an improvement and extension of the communal services with spa, sauna, equipped gymnasium and communal rooms, managed through the Communities of Owners as an extension of the common areas of Adagio under joint ownership.



Indicative and not real images



Our quality standards provide excellent results that will guarantee the comfort and enjoyment of the user's home, enjoying not only the best qualities on the market, but also the lowest possible energy consumption.



18 Energy qualification



Improved construction solutions to optimise energy consumption and ensure user comfort and enjoyment.



Use of LED bulbs in different areas of the building, guaranteeing optimum consumption, duration and efficiency.

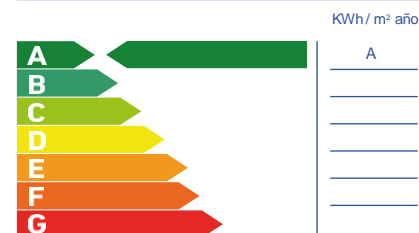


Latest technology in air conditioning and air quality systems, prioritising both the final result of the product and low consumption.

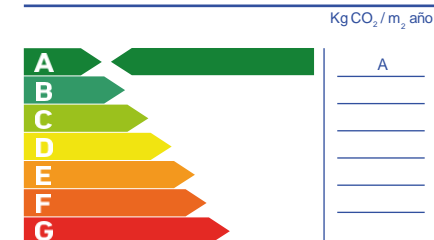


Environmentally friendly sanitary devices. Their low consumption means significant savings on the bill as well as helping to improve our environment.

Non-renewable primary energy consumption



Carbon dioxide emissions



Note: This information, perspective, measurements, dimensions and graphic documentation are for guidance only and are not binding from a contractual point of view. Consequently, they are subject to possible modifications due to technical, legal or administrative requirements derived from obtaining the necessary licences and authorisations, as well as construction or design needs in the opinion of the Project Management, without this entailing a reduction in quality. The furniture, gardening and electrical appliances are merely ornamental in nature and, therefore, are not delivered with the dwelling except when they are expressly included in the specifications. The cupboard heights refer to masonry openings. The kitchen furniture and the layout of the electrical appliances may undergo slight variations depending on their final assembly. The floor and wall tiles are also indicative and may undergo modifications.



